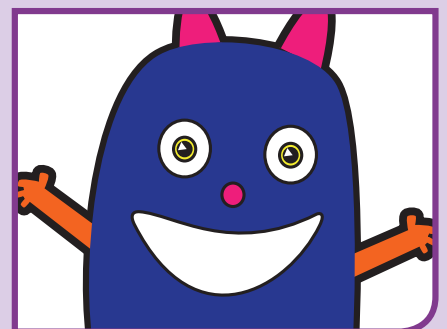
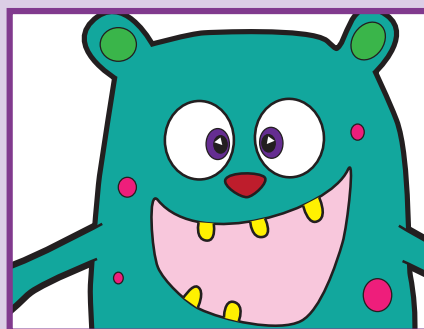
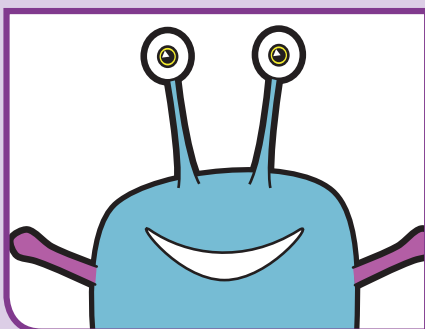
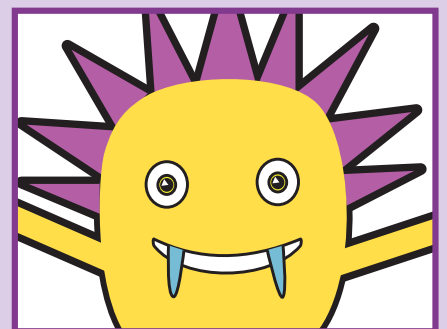
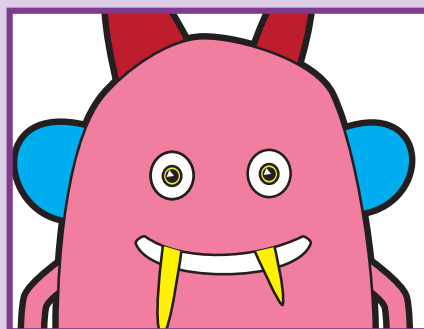
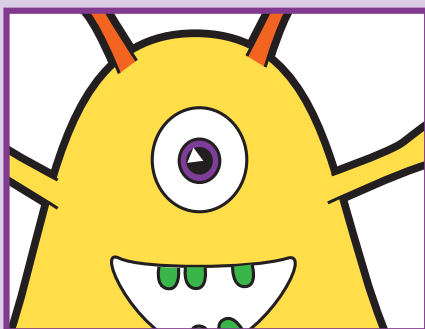
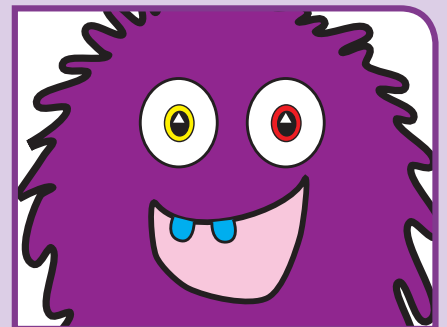
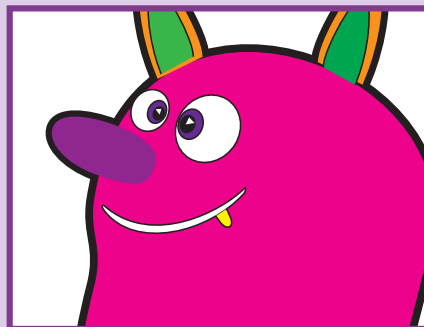
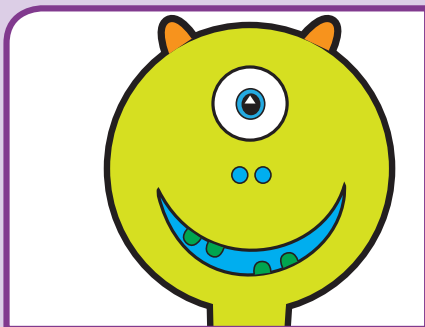


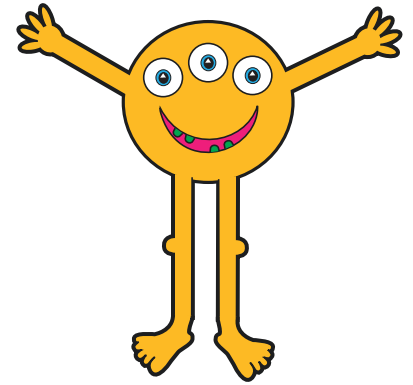
Key stage 1

Phonics screening check

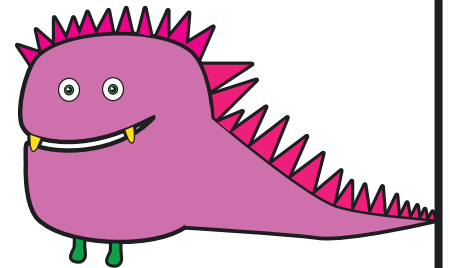
Pupils' materials



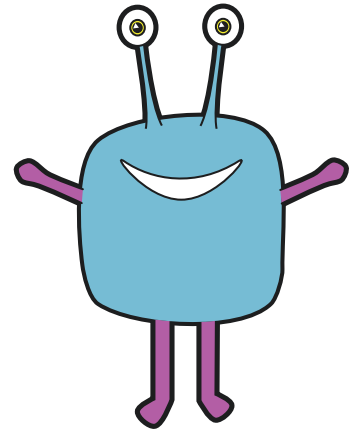
lig



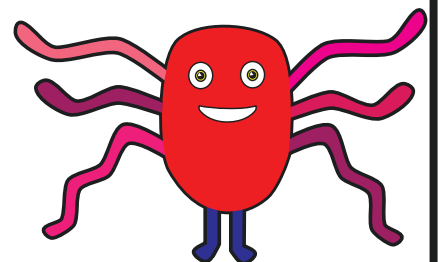
mep



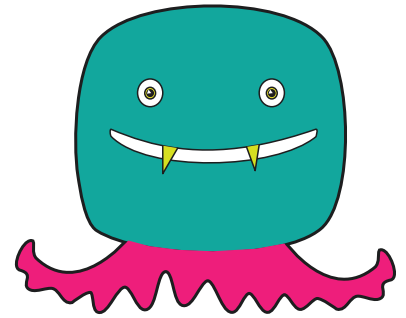
gax



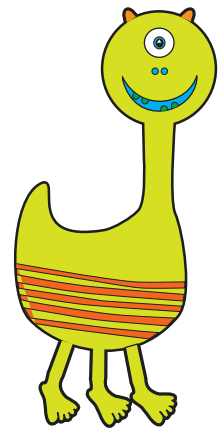
emp



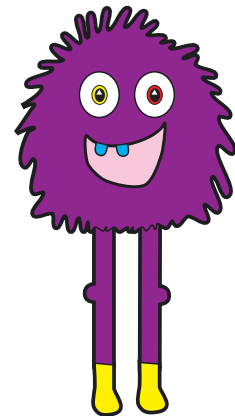
beff



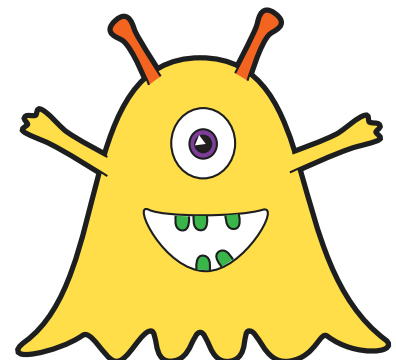
shup



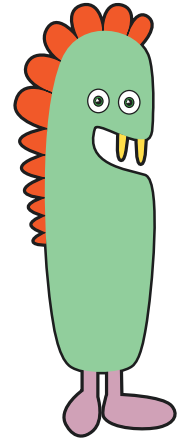
doil



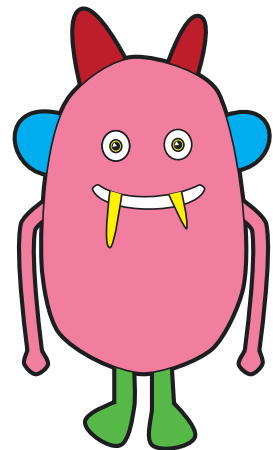
charb



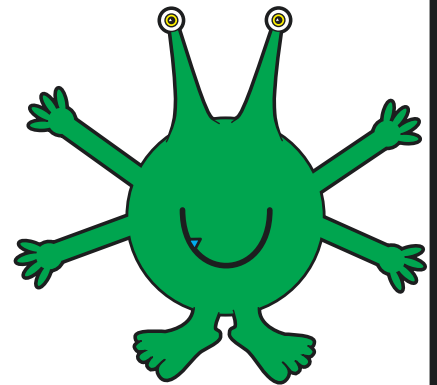
frex



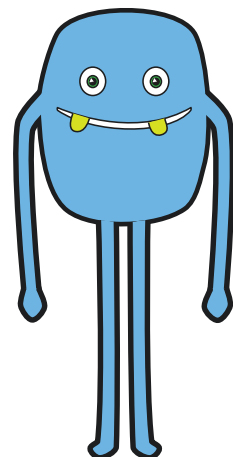
criff



haps



barst



chin

deck

horn

queen

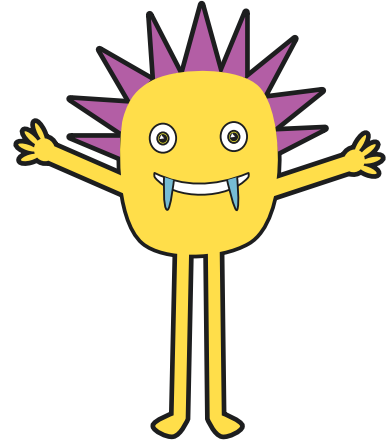
tram

press

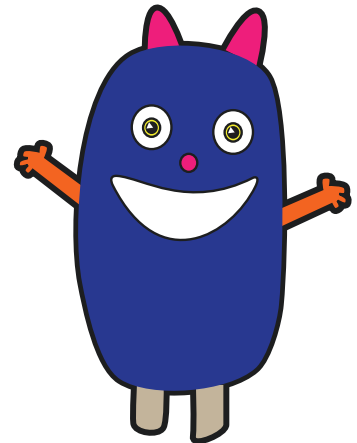
self

keeps

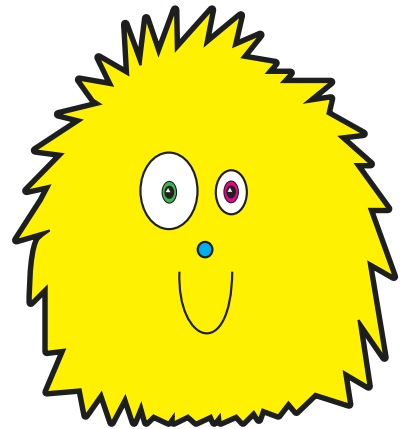
jigh



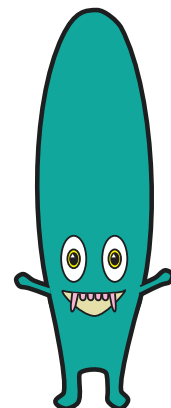
woats



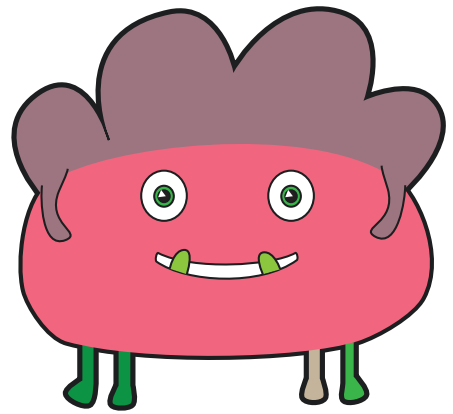
rird



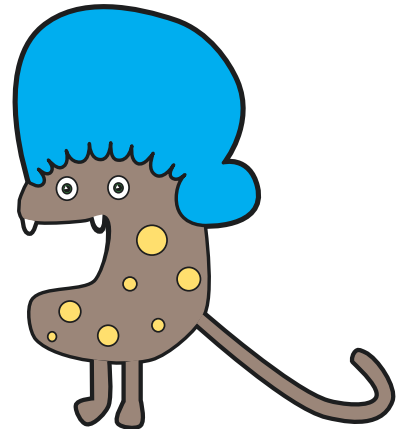
phope



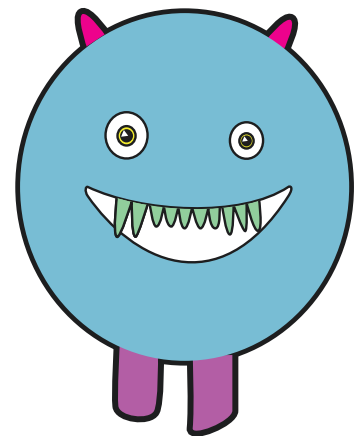
glips



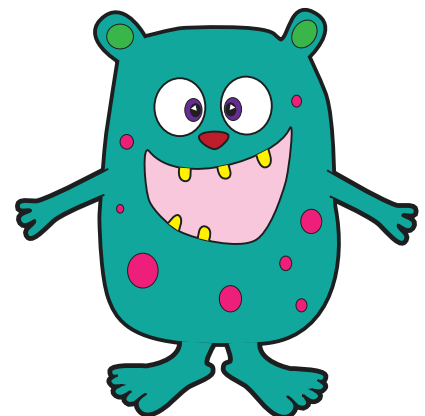
floost



splam



strobe



stair

haunt

lied

wove

drank

treats

scram

stroke

arrow

forest

wishing

brighter

[BLANK PAGE]

Please do not write on this page.

[BLANK PAGE]

Please do not write on this page.



2016 key stage 1 phonics screening check: Pupils' materials

Print version product code: STA/16/7501/p ISBN: 978-1-78644-084-6

Electronic PDF version product code: STA/16/7501/e ISBN: 978-1-78644-085-3

For more copies

Additional printed copies of this booklet are not available. It can be downloaded from www.gov.uk/government/publications.

© Crown copyright and Crown information 2016

Re-use of Crown copyright and Crown information in test materials

Subject to the exceptions listed below, the test materials on this website are Crown copyright or Crown information and you may re-use them (not including logos) free of charge in any format or medium in accordance with the terms of the Open Government Licence v3.0 which can be found on the National Archives website and accessed via the following link: www.nationalarchives.gov.uk/doc/open-government-licence.

When you use this information under the Open Government Licence v3.0, you should include the following attribution: 'Contains public sector information licensed under the Open Government Licence v3.0' and where possible provide a link to the licence.



Exceptions – third-party copyright content in test materials

You must obtain permission from the relevant copyright owners, as listed in the '2016 key stage 1 tests copyright report', for re-use of any third-party copyright content which we have identified in the test materials, as listed below. Alternatively you should remove the unlicensed third-party copyright content and/or replace it with appropriately licensed material.

Third-party content

These materials contain no third-party copyright content.

If you have any queries regarding these test materials contact the national curriculum assessments helpline on 0300 303 3013 or email assessments@education.gov.uk.